



2. ACTIVATING NODELOCKED LICENSE USING HARDWARE DONGLE

The **Hardware Dongle** (also referred to as a **Key** or **Security Block**) is an alternative form of single-user (**Standalone/Nodelocked**) Licensing for CAMWorks and protects against unauthorized use.

You will be provided with a Hardware Dongle if you choose it as your Licensing method. This dongle is a small hardware device that fits on the USB port of the computer.

Given in this chapter are the steps to activate a standalone license using [Hardware Dongle Licensing method](#).

License File for Hardware Dongle (*.COD file)

To activate your Nodelocked (Standalone/Single User) license using Hardware Dongle licensing method, you require a license file. You will be provided with a Hardware Dongle. The license file (with *.COD extension) contains licensing information will be emailed to you.

This license file you receive will be programmed to run the CAMWorks modules that you have purchased. The following information is embedded in the CAMWorks license file:

- Unique CAMWorks Serial Number
- Duration of the license ([Perpetual](#) or [Time-bound](#))
- [CAMWorks modules](#) and products you are licensed to run
- Expiry Date of your [User Subscription Plan](#)

Once received, this license file must be activated using the [CAMWorks License Manager](#) program.

If, at a later stage, you purchase additional modules/applications from the CAMWorks suite of modules and products, then you will be provided with a fresh *.cod file. You will need to replace your existing *.cod license file with the new file.

Note: The hardware dongle is essentially your license and you may want to insure it against loss. If the dongle is lost or stolen, you will be required to purchase a new license.

Pre-Requisites

1. **CAMWorks License Manager:** The [CAMWorks License Manager](#) program is a pre-requisite for activating the [.cod file](#) (License file for Hardware Dongle) that you will receive via email.

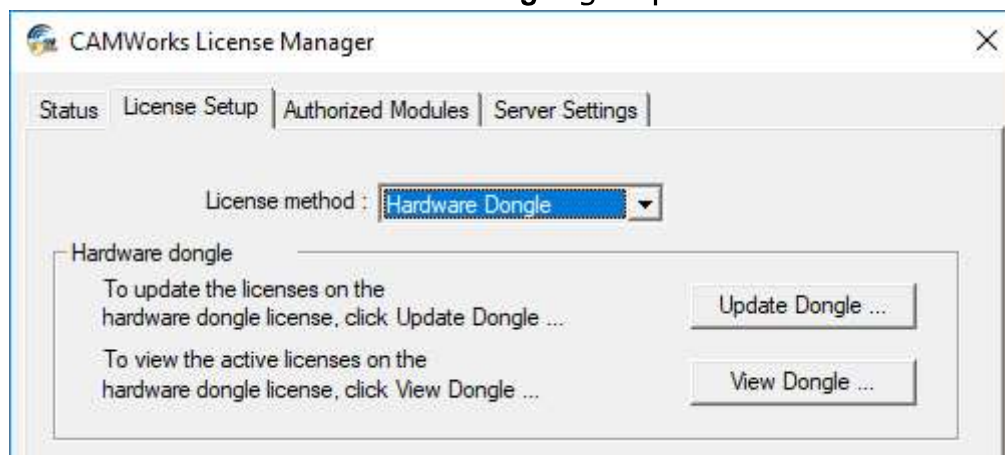


2. **Hardware Dongle License Driver:** The [Hardware Dongle License Driver \(Sentinel Driver ver. 7.6.9\)](#) program on your system facilitates the detection and activation of the Hardware Dongle on your system. This program is automatically installed when you install CAMWorks.
3. **Administrator Privileges:** You must be logged in as Administrator with full privileges when assigning or editing settings changes in the **CAMWorks License Manager** program.

Activating/Updating the License for Hardware Dongle

Given below are the steps to activate your Hardware Dongle license:

1. Attach the Hardware Dongle to the USB port of your computer.
2. You will have provided you with a **license file (*.cod)** for your hardware dongle via email. Save this file to your computer on which CAMWorks will be run.
3. [Launch the CAMWorks License Manager program with Admin-level rights.](#)
4. The CAMWorks License Manager dialog box will be displayed. Click on the **License Setup** tab.
5. For the License method, make sure the **Hardware Dongle** option is selected. This action activates the **Hardware Dongle** group box.



Select 'Hardware Dongle' as the License Method

6. Click on the **Update Dongle** button.
7. The **Open COD File** dialog box will be displayed.
8. Browse to the location where the *.cod file is located.
9. Select the *.**COD** file and click **Open**.
10. The **Update Protection Block** dialog box is displayed. This dialog box contains all information with respect to the license such as key information, authorized modules, authorized versions etc. Click on the **Update** button in this dialog box to activate/update the license.



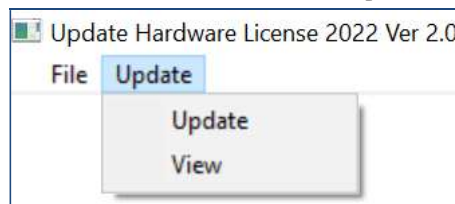
11. When the *.COD file is successfully updated/activated, the message "**Security Protection Block updated successfully**" will be displayed. Your Hardware Dongle License is now activated.

Note: If you are updating multiple dongles, make sure you have the correct *.cod file for each dongle.

Activating Hardware Dongle License using Key Manager

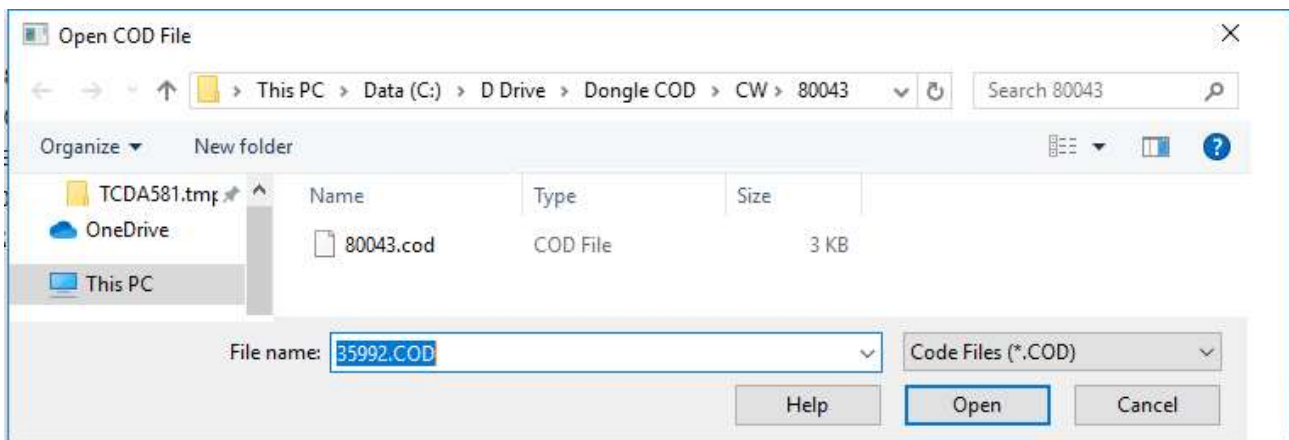
Activating/Updating the Hardware Dongle License using Key Manager

1. Attach the Hardware Dongle to the USB port of your computer.
2. You will have received a license file (*.cod) via email for your hardware dongle. Save this file to your computer on which CAMWorks will be run.
3. Click **Start** on the Windows 10 task bar and select **CAMWorks License Manager>>Key Manager**.
4. The **Update Hardware License 2022 Ver 2.0** dialog box will be displayed.



Update Menu Bar of the 'Update Hardware License' dialog box

5. Select **Update** on the menu bar, then select **Update** from the dropdown menu.
6. The **File Explorer** dialog box titled **Open COD File** will be displayed. The *.cod license file corresponding to your dongle will be listed in the **File name** field.
7. Browse to the folder location that contains the new *.COD file, then click **Open**.



Open COD File Dialog Box



License Activation Using Hardware Dongle

- A dialog box displays the current dongle information and the changes that will be made when the dongle is updated.
- Click the **Update** button within this dialog box.
- The **Update Hardware License 2022 Ver. 2.0 – CAMWorks for SOLIDWORKS** dialog box will be displayed. The left half of the user displays licensing information of the current hardware dongle license while the right half displays licensing information of the new license that will be activated.
Click on the Update button at the bottom of the dialog box to replace the current license with the new license.

Update Hardware License 2022 Ver. 2.0 – CAMWorks for SolidWorks

Current Key Information

Update Key Information

General

Key Number: [XXXXXX] Expiration Date: [MM-DD-YYYY]

Block Type

Customer Dealer Instructor Educational

CAMWorks

CAMWorks Ver: [MM-DD-YYYY]

2.5X Mill Limited 3X Undercut CWSolids Part

2.5X Mill 4X Mill CWSolids Part & Assembly

2.5X Mill Plus 5X Mill CWSolids Part, Assembly & Drawing

3X Mill L1 VoluMill 2.5X Utilities

3X Mill L2 VoluMill 3X Shop Floor

Turning Mach Sim Standard CW Nesting Ver: [.0]

Multi Function Mach Sim Pro

Mill-Turn Mach Sim Premium

Rotary Milling Mach Sim Legacy

Sub Spindle Wire EDM

Prime Turn

Miscellaneous

Feeds & Speeds Predator ParaSolid Translator

Internal ProVerify Acis Translator

ProCAM 2D Modules

ProCAM 2D Ver: [MM-DD-YYYY]

CAD Plasma Edit/DNC

Mill Punch Verify All

Laser EDM Lathe C Axis

Lathe 2 Axis Lathe 4 Axis

ProCAM 3D Modules

ProCAM 3D Ver: [MM-DD-YYYY]

CAD

Surfacing

3X Mill L1

3X Mill L2

Update Cancel

Update Hardware License 2022 Ver. 2.0 – CAMWorks for SOLIDWORKS dialog box

- When the *.cod file is successfully updated, the message **"Security Protection Block updated successfully"** will be displayed.
Your Hardware Dongle License is now activated/ updated.

Viewing Hardware Dongle Related Information using Key Manager

You can view your Hardware Dongle License Information using the [Key Manager](#) tool. For details, refer the topic: [Viewing Hardware Dongle Related Information using Key Manager Tool](#) in [Appendix A: CAMWorks Licensing Information](#) of this document.



Using the Hardware Dongle

Once the Hardware Dongle License is activated, it must always remain attached to your computer's USB port while *CAMWorks* is in use. *CAMWorks* scans and reads the license configuration in the dongle during start-up and periodically while it is running.

If you face any licensing issues with respect to Hardware Dongle Licensing, then for troubleshooting, refer [Troubleshooting A: License Activation & Troubleshooting B: Licensing Issues for Hardware Dongle Licensing](#).

Reactivating (Renewing) the Hardware Dongle License

You will need to reactivate/renew your Hardware Dongle license in the following scenarios:

- i. When you renew your [User Subscription Plan \(USP\)](#)
- ii. When you renew your [time-bound](#) license after it expires
- iii. When you purchase a reconfigured license that can run additional [CAMWorks modules](#) or products

Renewing the Hardware Dongle License using CAMWorks License Manager

The steps to be followed for renewing the hardware dongle license using the *CAMWorks License Manager* are the same as that for activating the license. For details, refer the topic: [Activating/Updating the License for Hardware Dongle](#) in this chapter.

Renewing the Hardware Dongle License using Key Manager

The steps to be followed for renewing the hardware dongle license are the same as that for activating the license. Refer the section [Activating/Updating the Hardware Dongle License using Key Manager](#) in this chapter.