

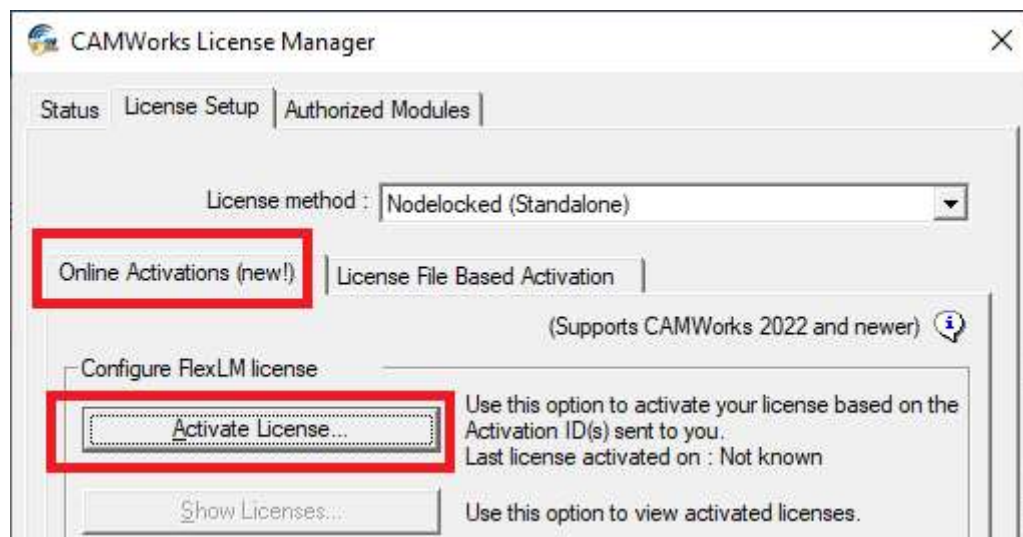


5. ACTIVATING A NODELOCKED LICENSE USING MANUAL METHOD

Given in this chapter are the steps to activate a [Nodelocked \(Standalone\) license](#) using the [Manual option](#) of [Online Activation](#) licensing method.

Steps to Activate a Nodelocked License using Manual Method

- i. Once you pay the applicable license fees, you will receive (usually via email) the Activation IDs (Product keys/ Entitlement IDs) for the products you purchase.
- ii. Download and install the *CAMWorks* application using the link provided to you. (Installing the *CAMWorks* application automatically also installs the *CAMWorks License Manager* program.)
- iii. [Launch the CAMWorks License Manager program.](#)
- iv. Switch to the *License Setup* tab. Under this tab, select **Nodelocked (Standalone)** as the *License Method*.
- v. Two pages (tabs) will now be displayed under this page viz. *Online Activations (New!)* and *License Based Activation*. Click on the *Online Activations (New!)* page under the tab. Ensure that you have a live Internet connection.
- vi. In the **Configure FlexLM License** group box under this page, click on the **Activate License...** button.



License Setup Tab



- vii. The *CAMWorks Product Activation* dialog box will be displayed. Select the **Manually via E-mail (Add all activation IDs and then click on activate)** option.
- viii. In the field provided below the label '**Enter your Activation ID(s) and click on Add button:**', input the Activation ID provided to you.
- ix. Click on the *Add* button adjacent to this field. The Activation ID input by you will then be listed in the **Activation IDs to be activated** list box below the field.
- x. If you have been provided multiple Activation IDs, then repeat steps viii. and ix.
- xi. Place a check in the **I have read the HCL Technologies Privacy Policy and agree to its terms and conditions** check box.
- xii. Placing the check in this checkbox activates the **Activate My Products...** button at the bottom of the dialog box. Click on this button.

Assign Settings as indicated above in the CAMWorks Product Activation Dialog Box

- xiii. The *CAMWorks Product Activation - Manual Method Wizard* will be displayed.
- xiv. Provide your **username** and **email ID** and click the **Save** button.
- xv. A modal window indicating that the file has been successfully generated and saved will be displayed. This message will also indicate the file path to the saved file. This license request file generated contains the Activation ID(s) to be validated and activated.
- xvi. Email this license request file to Register@camworks.com.



Assign Settings as indicated above in the CAMWorks Product Activation - Manual Method Wizard

- xvii. You will receive a *CAMWorks Response file (*.cwlrc)* file via email within maximum one business day. Save this file on the machine on which you intend to activate the license.
- xviii. Click on the **Activate My Products...** command button in the *CAMWorks Product Activation* dialog box again to invoke the **CAMWorks Product Activation - Manual Method Wizard**.



CAMWorks Product Activation

1) Activation ID(s) which needs to be activated or deactivated

XXXX-XXXX-XXXX-XXXX-XXXX-XXXX-XXXX-XXXX

2) Press save to create a request file

Name* : xyz

Email-ID* : xyz@abc.com

Save...

3) Email the request to the following address to get a response file : **Register@camworks.com**

OR Upload File on self service portal. (Login is required)

[Click here to open portal in a web browser](#)

4) Press open to load the response file

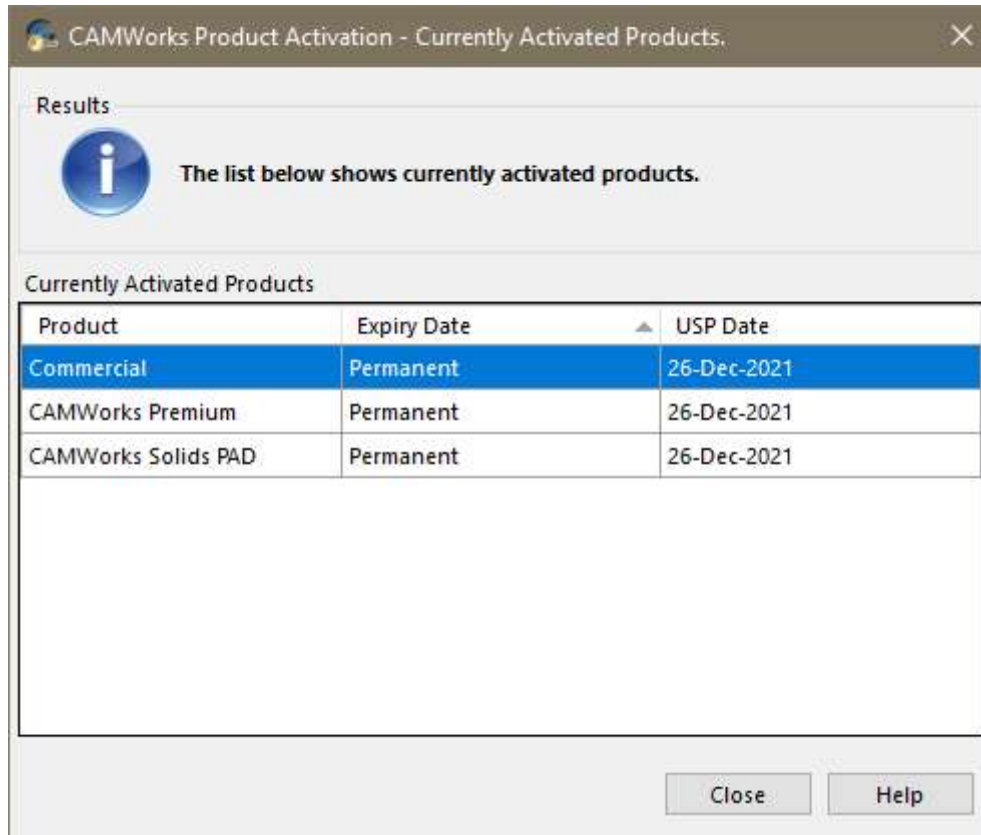
Open...

If you have received the response file, load it by clicking the Open button and then proceed with the below option. To discontinue, click Close. You can rerun the Wizard later.

Help Activate My Product(s) Close

After receiving the response file, assign Settings as indicated above in the CAMWorks Product Activation - Manual Method Wizard

- xix. Click on the **Open...** button in this wizard to browse and select this *CAMWorks Response* file.
- xx. Once this file is selected, click on the **Activate My Products...** button at the bottom of the wizard.
- xxi. If successfully activated, the *CAMWorks Activation – Currently Activated Products* dialog box listing all the activated products will be displayed. This user interface will list each activated CAMWorks product, the expiry date of the product and the expiry date of its [User Subscription Plan \(USP\)](#) in tabular format.



CAMWorks Product Activation – Currently Activated Products Dialog Box

- xxii. Click on the *Close* button to close this user interface.
- xxiii. The user interface will now revert to the *License Setup* tab. Close the *CAMWorks License Manager* dialog box.
Your *CAMWorks* license is now successfully activated. You can now commence using the *CAMWorks* application.