



# DID YOU KNOW YOU HAVE

## **SOLIDWORKS | CAM** Powered by CAMWorks

*SOLIDWORKS CAM Standard is a 2.5 & 3 axis milling solution included in every seat of SOLIDWORKS\**

\*Versions 2018 and later, currently on subscription

## THE SMART MANUFACTURING ECOSYSTEM

### AUTOMATING CNC PROGRAMMING WITH SOLIDWORKS CAM

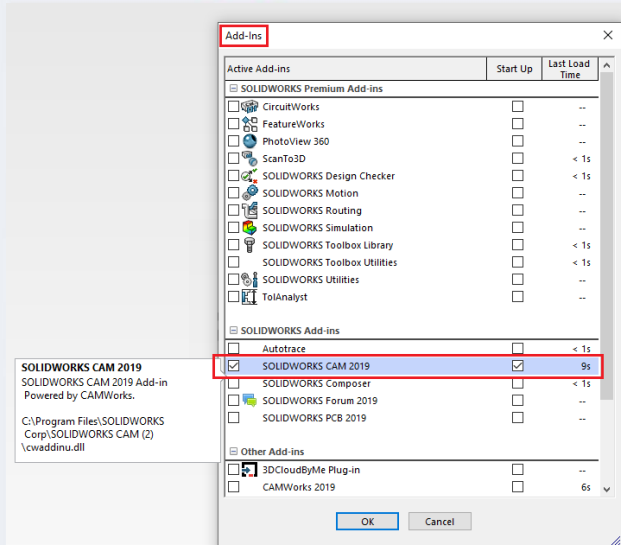
SOLIDWORKS CAM is an integrated 2.5 & 3 axis CNC milling and 2 axis CNC lathe programming solution powered by CAMWorks. By utilizing the emerging technologies of Model Based Definition (MBD) and Knowledge Based Machining, SOLIDWORKS CAM can rapidly transform your design-to-manufacturing process by improving communication, reducing errors, reducing cycle times, and increasing your product quality.

**CAMWorks is the only CAM system that is 100% compatible with SOLIDWORKS CAM!**

#### Where can I find SOLIDWORKS CAM in SOLIDWORKS?

\* Every seat of SOLIDWORKS 2018, SOLIDWORKS 2019 & the upcoming SOLIDWORKS 2020 currently on subscription, includes SOLIDWORKS CAM Standard

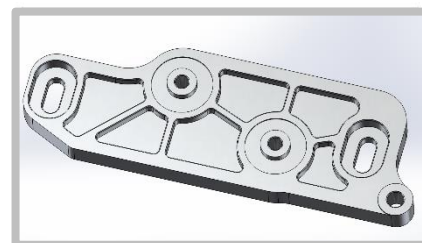
**You can find SOLIDWORKS CAM under Add-ins**



#### Which SOLIDWORKS CAM Package is Right for You?

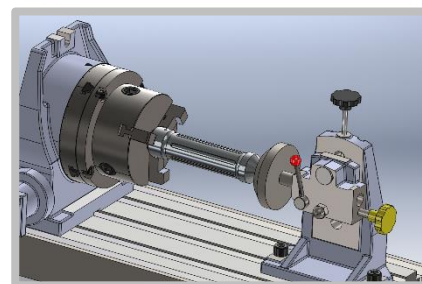
##### SOLIDWORKS CAM Standard

SOLIDWORKS CAM Standard includes programming for individual 2.5 & 3 Axis Milling parts and includes Tolerance-Based Machining (TBM)



##### SOLIDWORKS CAM Professional

SOLIDWORKS CAM Professional builds on the capabilities of SOLIDWORKS CAM Standard to increase programming capabilities. SOLIDWORKS CAM Professional adds: Assembly Machining, Turning, 3+2 Milling, High-Speed Machining, and support for multiple SOLIDWORKS CAM configurations



#### Where Can I Get Post Processors?

Post processors are a critical part of any CAM system. Their basic function is to translate the toolpath you see on screen to machine-readable code (G-code), but with the right post processor you can reduce machine cycle time, remove manual editing and provide more information to your operators for a faster setup time

Here is the link for our post processor library -  
<https://camworks.com/post-processor-library/>

#### Where Can I Access SOLIDWORKS CAM Trainings & Webinars?

CAMWorks team conducts SOLIDWORKS CAM trainings and webinars every quarter. You can register for webinars on below link  
<https://camworks.com/new-events/webinar-learn-solidworks-cam-today/>

You can also reach out to your local SOLIDWORKS reseller and  
<https://www.solidprofessor.com/>

# SOLIDWORKS CAM BENEFITS

## Reduce Programing Time

- Simplifies collaboration - single design and programming environment allows easier transition to CAM
- Rules-based machining allows companies to capture their best practices
- Feature-based intelligent machining

## Improve Quality

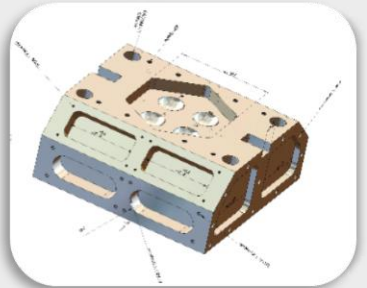
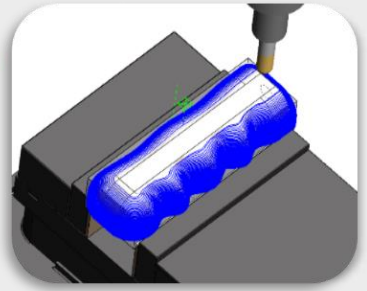
- Automatically updates toolpaths to design changes
- Utilizes concurrent development process - allowing companies to perform tasks sooner, find problems earlier, and reduce rework and scrap

## Faster Cycle Times

- Reduce cycle time up to 80%
- Increase tool life up to 500%
- Often doubles machining capacity

## Tolerance Based Machining

- Reads SOLIDWORKS MBD/DimXpert dimensions and surface finishes
- Automatically selects machining strategies to meet the specified tolerances



## SOLIDWORKS CAM UPGRADE PATH

Function	SOLIDWORKS CAM Standard	SOLIDWORKS CAM Professional	CAMWorks Standard	CAMWorks Milling Standard	CAMWorks Turning Standard	CAMWorks Milling Professional	CAMWorks Turning Professional	CAMWorks Premium	CAMWorks Bundle Add-Ons
2.5 Axis Milling Plus*	✓	✓	✓	✓	✓	✓	✓	✓	
Cimco Editor/DNC	✓	✓	✓	✓	✓	✓	✓	✓	
2.5 Axis VoluMill		✓	✓	✓	✓	✓	✓	✓	
Probing		✓	✓	✓	✓	✓	✓	✓	
3 Axis Milling - L1*		✓	✓	✓	✓	✓	✓	✓	
4/5 Axis Indexing		✓	✓	✓	✓	✓	✓	✓	
Turning		✓	✓	✓	✓	✓	✓	✓	
Sub-Spindle			✓	✓	✓	✓	✓	✓	
Rotary Milling			✓	✓	✓	✓	✓	✓	
3 Axis Milling - L2*				✓		✓		✓	
Mill-Turn					✓	✓	✓	✓	
3 Axis Milling - L3*						✓		✓	
Synchronous Machining for Lathes							✓	✓	✓
Virtual Machine Standard							✓	✓	✓
4 Axis Milling (Add-On to Milling Pro only)								✓	✓
5 Axis Simultaneous								✓	

### Products available as Bundle Add On

3 Axis VoluMill  
Virtual Machine Professional  
Virtual Machine Premium  
PrimeTurning™  
CAMWorks Utilities

### Additional Product Options

Wire EDM  
NestingWorks  
CAMWorks ShopFloor

\* 2.5 Axis Milling Plus includes 2.5 Axis Milling plus Area Clear Roughing, Flat Area and Z-Level Finishing

\* 3 Axis Milling L1 includes all of the above plus a Z-Level Finishing combined cycle for steep/shallow machining

\* 3 Axis Milling L2 Includes all L1 functionality plus Pattern Project Constant Step, Pencil Milling, 3 Axis Rest Machining, Curve Project, and Legacy Rough & Finish Mill

\* 3 Axis Milling L3 Includes L2 functionality plus Multi-Axis Operations including Undercutting, Fillet Machining, and NURB Surface Machining

PrimeTurning™ is a Sandvik Coromant product.



### About CAMWorks:

CAMWorks is an intuitive CAM software combining production-proven feature based CAM technology, automatic feature recognition, and rules based machining along with tolerance based machining to leverage MBD and PMI technology to automate Smart Manufacturing for CNC programming – paving the way to advanced digital manufacturing.

For more details, please visit [www.camworks.com](http://www.camworks.com) or contact [camworks.inquiries@hcl.com](mailto:camworks.inquiries@hcl.com)