



4. TRANSFERRING NODELOCKED LICENSE USING AUTOMATIC METHOD

The need to transfer your active *CAMWorks* license from one machine to another usually comes up when you upgrade your hardware or Windows systems.

The *Online Deactivation/Activation* options provided within the [CAMWorks License Manager](#) program allow you to deactivate your active *CAMWorks Nodelocked license* on your current Windows system and then transfer and activate that license on another Windows system.

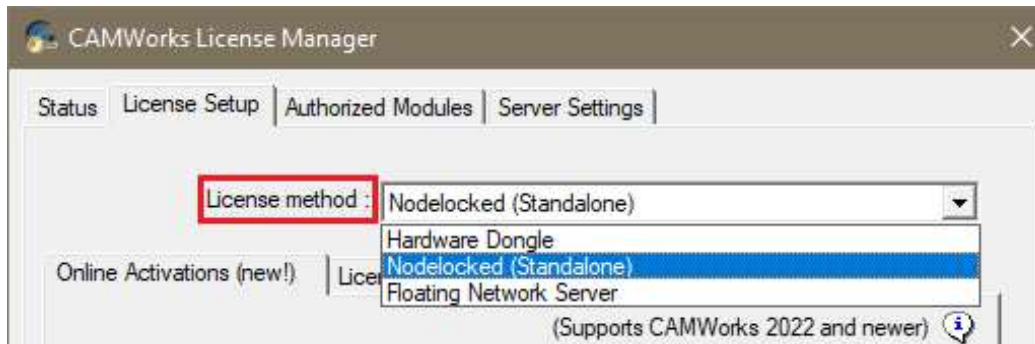
This chapter covers the [Automatic Method of License Deactivation](#).

This topic covers all the steps involved in transferring your *CAMWorks Nodelocked license* from one system to another using *Automatic Method of Online Deactivation/Activation*.

Steps to Transfer License using Automatic Method

Given below are the steps involved in transferring your *CAMWorks Nodelocked license* from one system to another using *Automatic Method of Online Deactivation/Activation*.

- i. [Launch the CAMWorks License Manager program](#). The *CAMWorks License Manager* dialog box will be displayed.
- ii. Click on the *License Setup* tab of this dialog box. Under this tab, ensure that ***Nodelocked (Standalone)*** is selected as the ***License Method***.

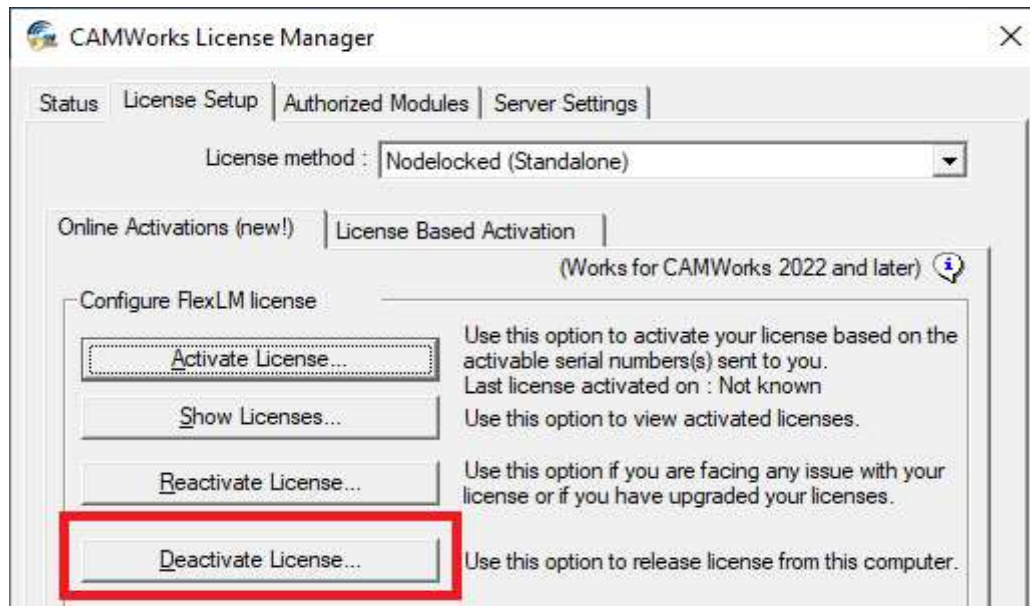


Select '***Nodelocked (Standalone)***' option for License Method

- iii. Selecting the ***Nodelocked (Standalone)*** option displays two contextual tabs under the *License Setup* tab. Click on the ***Online Activations (New!)*** tab under the *License Setup* tab. Ensure that you have a live Internet connection.
- iv. In the ***Configure FlexLM License*** group box under this contextual tab, click on the ***Deactivate License...*** button.

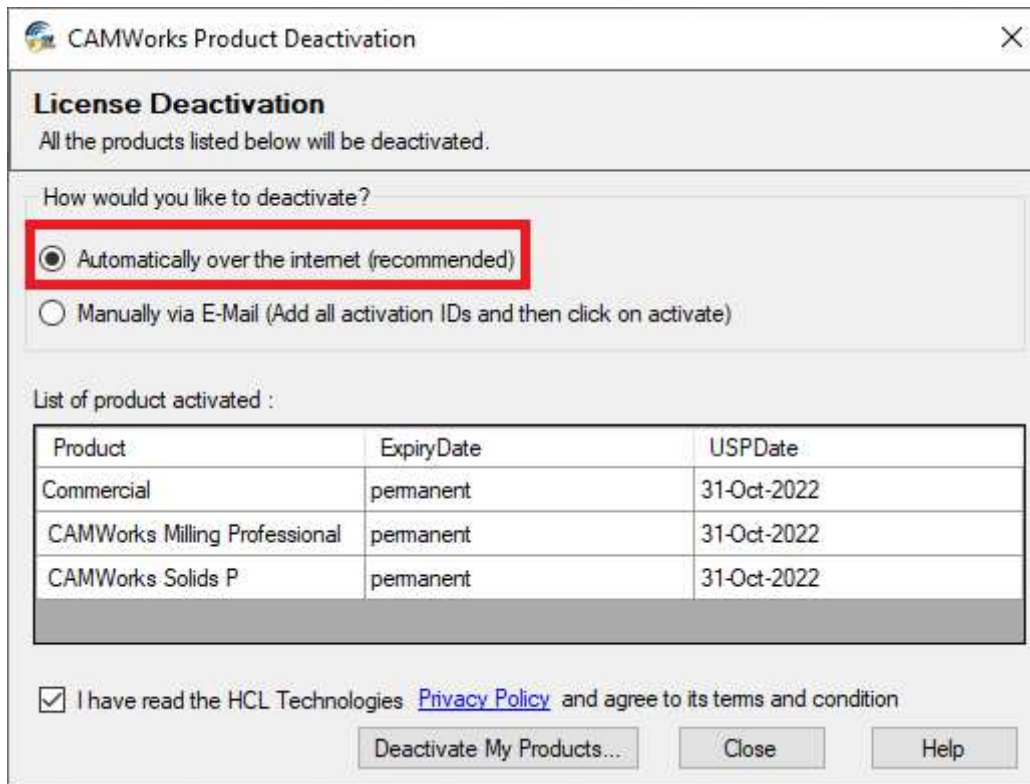


License Activation Using Online Activation Method



Click on 'Deactivate License...' button present in Online Activations Contextual tab under License Setup Tab

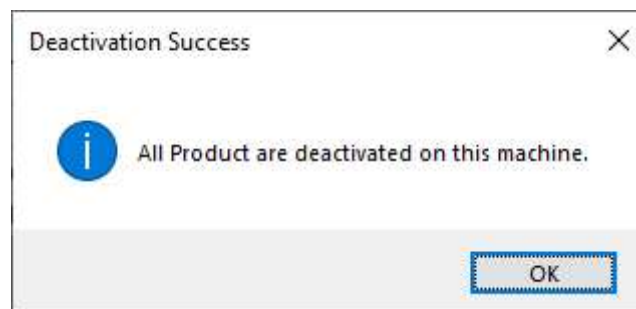
- v. The **CAMWorks Product Deactivation** dialog box will be displayed. Select the **Automatically over the Internet (Recommended)** option.



CAMWorks Product Deactivation Dialog Box



- vi. The **List of Product(s) Activated** list box will display all the CAMWorks products currently active on the machine. The license expiry date and [User Subscription Plan \(USP\) expiry date](#) of each product will also be displayed.
- vii. Place a check in the **I have read the HCL Technologies Privacy Policy and agree to its terms and conditions** check box.
- viii. Placing a check in this check box activates the **Deactivate My Products...** button at the bottom of the dialog box. Click on this button.
- ix. The license manager mechanism will contact the license servers of HCL Technologies via the Internet. It will validate and get all the CAMWorks products listed in the **List of Product(s) activated** list box deactivated.
- x. Once this process is complete, the **Deactivation Success** modal window will be displayed. This modal window will display a status message indicating that all the previously active products have now been successfully deactivated on the machine. Click on the OK button of this modal window to close it. The user interface will revert to the **CAMWorks Product Deactivation** dialog box. Observe that the **List of Product(s) activated** list box in this dialog box is now empty.



Deactivation Success Modal Window

- xi. Click on the **Close** button at the bottom of the dialog box to revert to the **License Setup** tab.
- xii. Close the **CAMWorks License Manager** dialog box.

Your CAMWorks license is now successfully deactivated. You can now transfer the license to another machine of your choice by activating the license on that machine. This activation can be done automatically or manually using the *Online Activation Method*. The steps involved are identical to activating a fresh Nodelocked license.

Based on whether a live Internet connection is available or not on the new system on which you intend to activate the license, refer the following topics of this document respectively:

- [Steps to Activate Nodelocked License using Automatic Method](#) in [Chapter 2](#)
- [Steps to Activate a Nodelocked License using Manual Method](#) in [Chapter 5](#)