



## 7. TRANSFERRING NODELOCKED LICENSE USING MANUAL METHOD

The need to transfer your active *CAMWorks* license from one machine to another usually comes up when you upgrade your hardware or Windows systems.

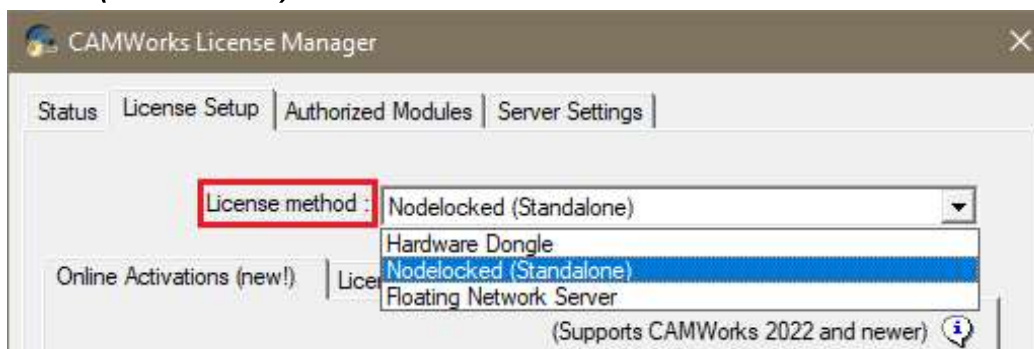
The *Online Deactivation/Activation* options provided within the [CAMWorks License Manager](#) program allow you to deactivate your active *CAMWorks Nodelocked license* on your current Windows system and then transfer and activate that license on another Windows system.

This chapter covers the [Manual Method of License Deactivation](#). This topic covers all the steps involved in transferring your *CAMWorks Nodelocked license* from one system to another using *Manual Method of Online Deactivation/Activation*.

### Manual Method of License Deactivation and Activation

Given below are the steps involved in transferring your *CAMWorks Nodelocked license* from one system to another using *Manual Method of Online Deactivation/Activation*.

- i. [Launch the CAMWorks License Manager program](#). The *CAMWorks License Manager* dialog box will be displayed.
- ii. Click on the *License Setup* tab of this dialog box. Under this tab, ensure that ***Nodelocked (Standalone)*** is selected as the ***License Method***.

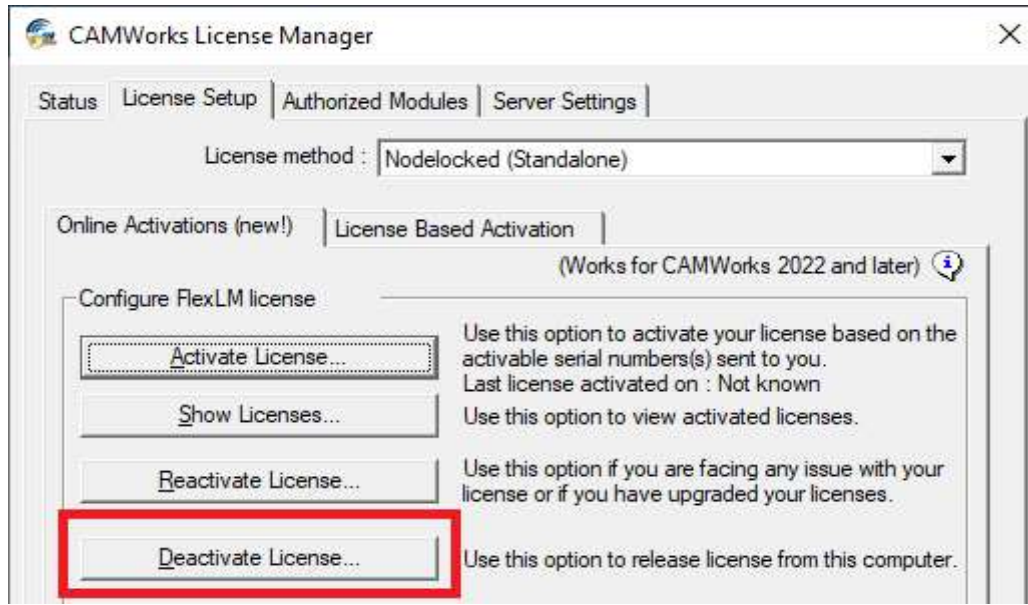


Select '***Nodelocked (Standalone)***' option for License Method

- iii. Selecting the ***Nodelocked (Standalone)*** option displays two contextual tabs under the *License Setup* tab. Click on the ***Online Activations (New!)*** tab under the *License Setup* tab.
- iv. In the ***Configure FlexLM License*** group box under this contextual tab, click on the ***Deactivate License...*** button.

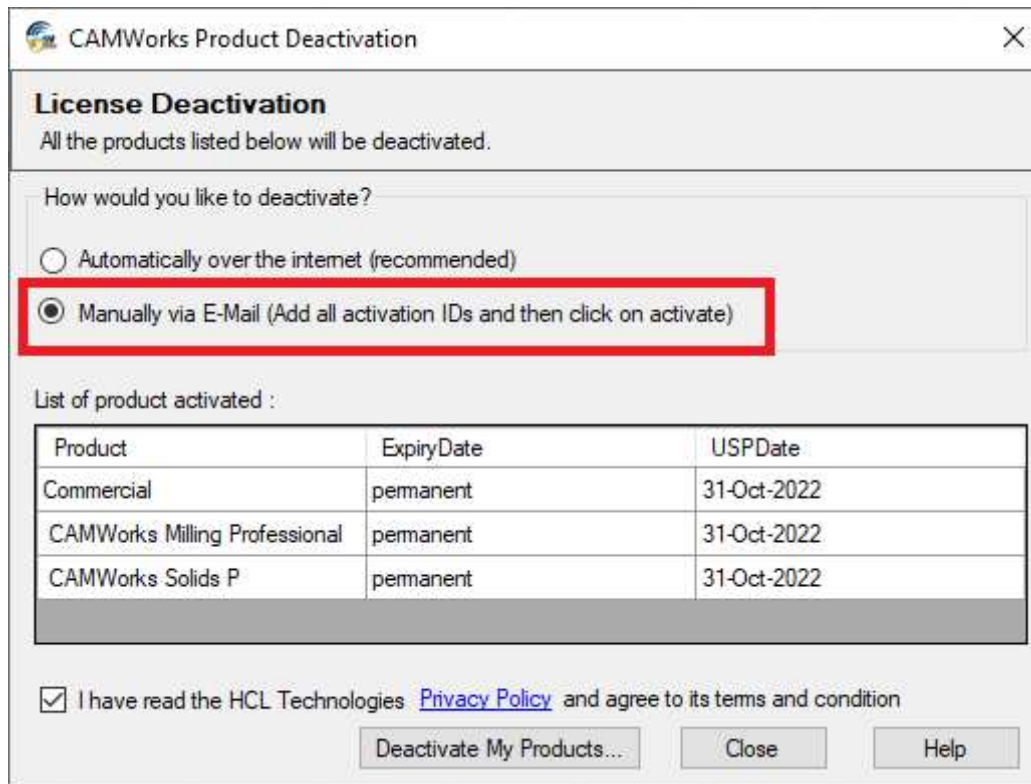


## License Activation Using Online Activation Method



Click on 'Deactivate License...' button under Online Activations Page of License Setup Tab

- v. The **CAMWorks Product Deactivation** dialog box will be displayed. Select the **Manually via E-Mail** option.



CAMWorks Product Deactivation Dialog Box



- vi. The **List of Product(s) Activated** list box will display all the CAMWorks products currently active on the machine. The license expiry date and [User Subscription Plan \(USP\) expiry date](#) of each product will also be displayed.
- vii. Place a check in the **I have read the HCL Technologies Privacy Policy and agree to its terms and conditions** check box.
- viii. Placing a check in this check box activates the **Deactivate My Products...** button at the bottom of the dialog box. Click on this button.
- ix. The *CAMWorks Product Deactivation - Manual Method Wizard* will be displayed.
- x. Provide your **Username** and **Email-ID** and click the **Save** button.

1) Activation ID(s) which needs to be deactivated

xxxx-xxxx-xxxx-xxxx-xxxx-xxxx-xxxx-xxxx

2) Press save to create a request file

Username\* : xxxxx xxxxx

Email-ID\* : xxxxx@xxx.com

Save...

3) Email the request to the following address to get a response file : **GT-Register@camworks.com** OR Upload File on self service portal. ( Login is required )

[Click here to open portal in a web browser](#)

### CAMWorks Product Deactivation – Manual Method Wizard

- xi. A modal window prompting you to confirm whether you are sure about deactivating the license will be displayed. Click the **OK** button within this modal window.

Are you sure you want to deactivate existing license?

Are you sure you want to deactivate existing license?  
CAMWorks will not work once deactivation is done.

OK Cancel

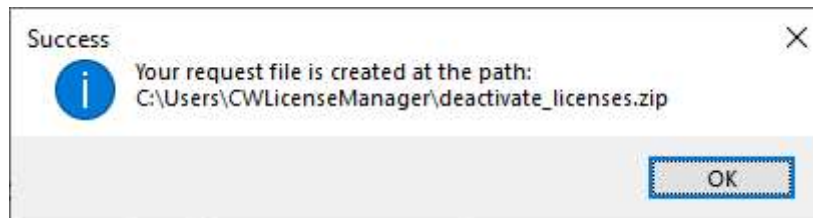
### Modal Window Prompting Confirmation for Deactivating CAMWorks License



## License Activation Using Online Activation Method

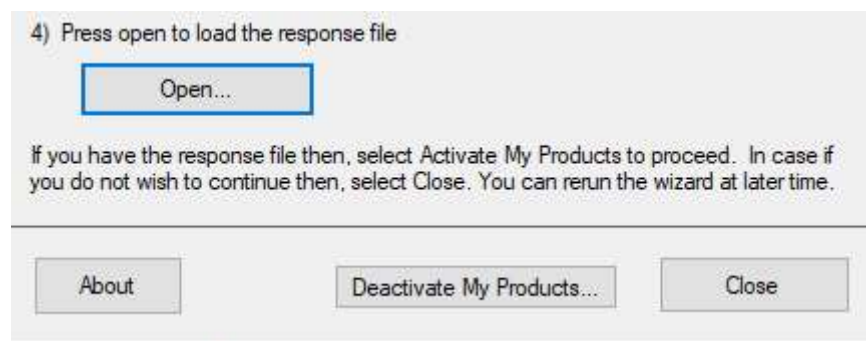
---

- xii. Once you click the OK button of this modal window, the license manager mechanism will generate a request file (in zip format) containing the Activation ID(s) to be deactivated. After successful generation of this file, a modal window indicating successful generation of the request file for deactivating the license will be displayed.



**Modal Window indicating successful generation of Request File**

- xiii. Click the OK button within this modal window to close it and revert to the previous user interface.
- xiv. Email this license request file to [Register@camworks.com](mailto:Register@camworks.com).
- xv. You will receive a **CAMWorks Response File (\*.cwlrc)** file via email within maximum one business day. Save this file on the machine on which you intend to deactivate the license.
- xvi. [Launch the CAMWorks License Manager program](#) once again and navigate to its *License Setup* tab. Click on the **Deactivate License...** button in the **Online Activations (New!)** contextual tab under this tab.
- xvii. The **CAMWorks Product Deactivation** dialog box will be displayed. Click on the **Deactivate My Products...** command button in this dialog box again to invoke the **CAMWorks Product Deactivation - Manual Method Wizard**.
- xviii. Click on the **Open...** button in this wizard to browse and select this *Response* file.

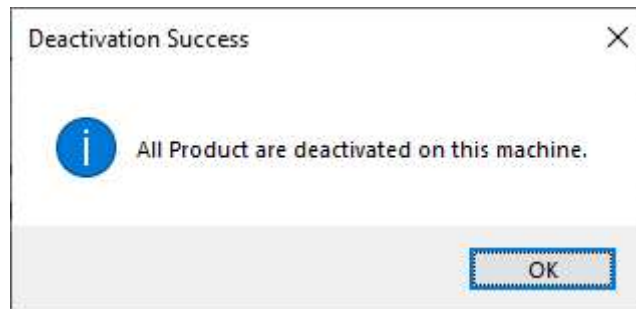


**Click 'Open' button to load the Response File and Deactivate the License**

- xix. Once this file is selected, click on the **Deactivate My Products...** button at the bottom of the wizard.



- xx. Once successfully deactivated, the **Deactivation Success** modal window will be displayed. Click on the **OK** button of this modal window to close it.



**Deactivation Success Modal Window**

- xxi. The user interface will revert to the *CAMWorks Product Deactivation - Manual Method Wizard*. Click on the *Close* button within this wizard.
- xxii. The user interface will now revert to the *CAMWorks Product Deactivation* dialog box. Click on the *Close* button within this dialog box.
- xxiii. The user interface will revert to the *License Setup* tab. Close the *CAMWorks License Manager* dialog box.

Your *CAMWorks* license is now successfully deactivated. You can now transfer the license to another machine of your choice by activating the license on that machine. This activation can be done [automatically or manually using the Online Activation Method](#). The steps involved are identical to activating a fresh Nodelocked license.

Based on whether a live Internet connection is available or not on the new system on which you intend to activate the license, refer the following topics of this document:

- [Activating a Nodelocked License using Automatic Method](#) in [Chapter 2](#)
- [Activating a Nodelocked License using Manual Method](#) in [Chapter 5](#)